



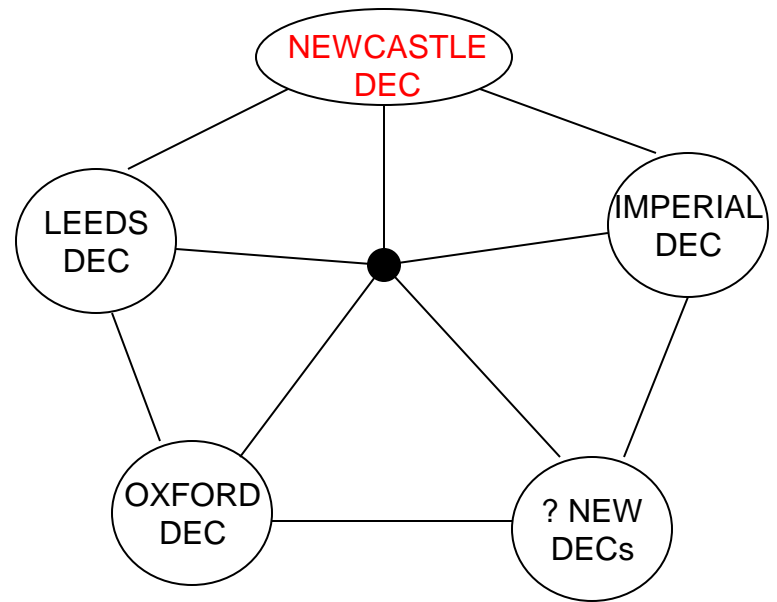
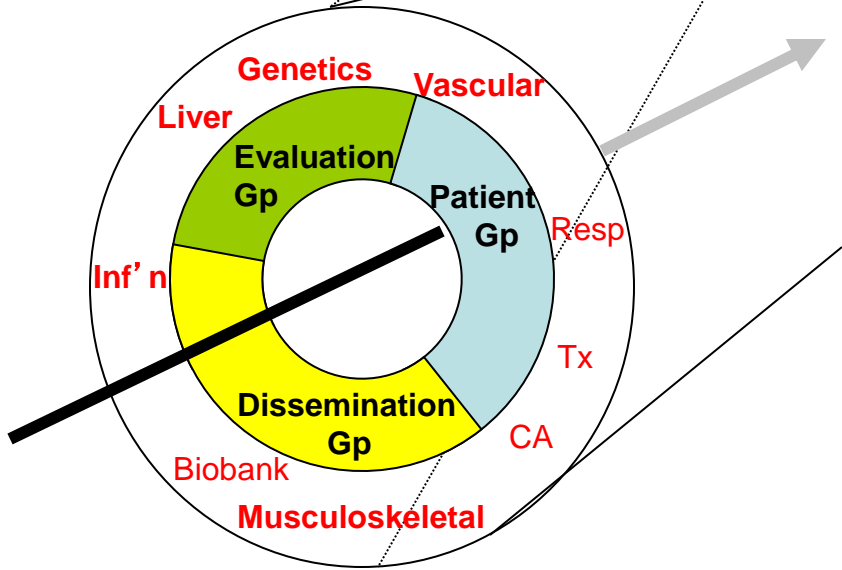
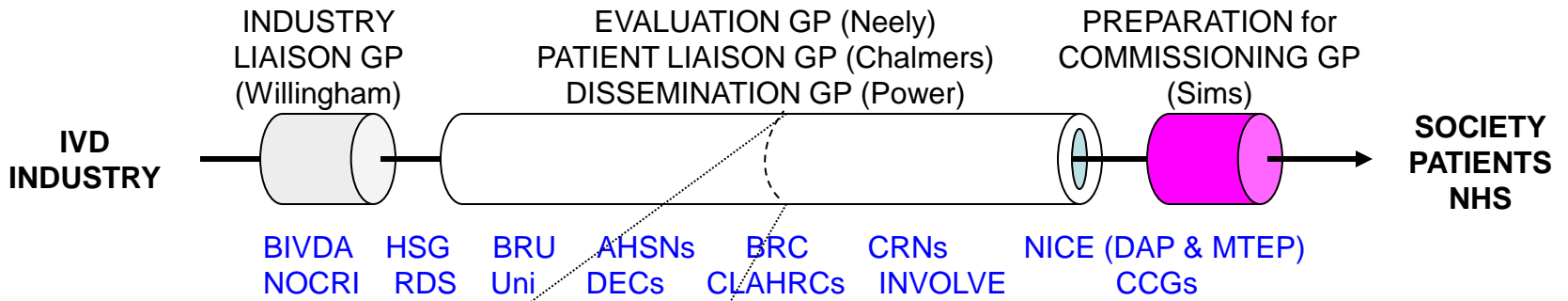
The Newcastle upon Tyne Hospitals



NHS Foundation Trust

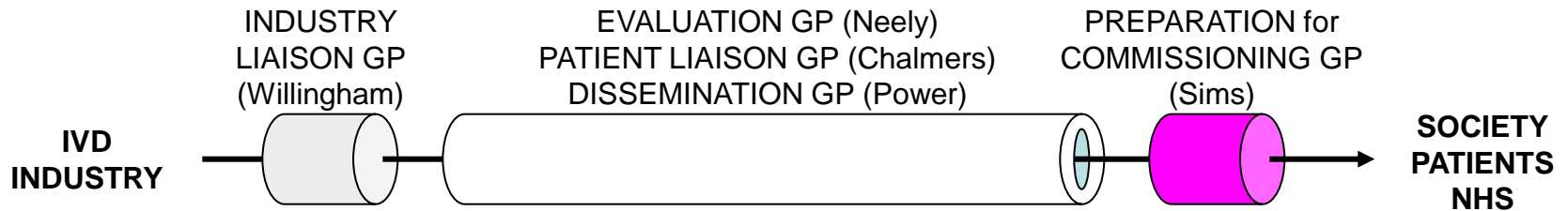
Newcastle NIHR Diagnostic Evidence Co-operative





Progress?

Buy-in from IVD companies, clinicians, academics, stakeholders



+ statistics, health economist, finance, managers etc

External advice from Jon Deeks, Patrick Bossuyt

Our first external funding

Full-time project manager

The process that has evolved with IVD companies



What sort of products?

Proadrenomedullin in acute illness

Rapid diagnostics for flu

Familial hypercholesterolaemia

Galectin-3 in heart failure

Bacterial detection in whole blood

What do we want now?



Newcastle, pictured
earlier today

What's next?

Increase our critical mass

Obtain further funding

Increase our visibility

Closer interaction with the other DEC's

Come and see us in Newcastle / get in touch

j.simpson@ncl.ac.uk

finn.willingham@ncl.ac.uk

ray.waters@ncl.ac.uk

michael.power@nuth.nhs.uk

michael.wright@nuth.nhs.uk

